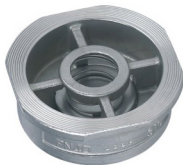


WAFER TYPE CHECK VALVE  
 (WCB, CF8, CF8M)

## 对夹式止回阀

## ① 对夹式止回阀 H71

Wafer type spring check Valve H71



①

## ② 蝶形对夹式止回阀 H76

Wafer type double disc spring check Valve H76



②

## ③ 对夹式单瓣止回阀 H74

Wafer type single disc check Valve H74



③

## 主要零件材料 Materials of main parts

零件名称 Description of Parts	H <sub>2</sub> H-(16-64C)	H <sub>2</sub> W-(16-64P)	H <sub>2</sub> W-(16-64R)
阀体 Body	WCB	ZG1Cr18Ni9Ti CF8	ZG1Cr18Ni12Mo2Ti CF8M
阀瓣 Disc	ZG1Cr18Ni9Ti CF8	ZG1Cr18Ni9Ti CF8	ZG1Cr18Ni12Mo2Ti CF8M
密封 Sealing		304Si6_PTFE	

## 性能规范 Specifications

公称压力: PN1.6,2.5,4.0,6.4MPa  
 强度试验压力: PT2.4,3.8,6.0,9.6MPa  
 高压密封试验压力: 1.8,2.8,4.4,7.1MPa  
 适用介质: H<sub>2</sub>H-(16-64C) 水、油品、气  
 适用温度: -29~180°C  
 适用介质: H<sub>2</sub>W-(16-64P) 硝酸类  
 H<sub>2</sub>W-(16-64R) 醋酸类

Nominal pressure: PN1.6,2.5,4.0,6.4MPa  
 Strength testing pressure: PT2.4,3.8,6.0,9.6MPa  
 Seat testing pressure (high pressure): 1.8,2.8,4.4,7.1MPa  
 Applicable media:  
 H<sub>2</sub>H-(16-64C) Water,Oil,Gas  
 Applicable temperature: -29~180°C  
 Applicable media:  
 H<sub>2</sub>W-(16-64P) Nitric acid  
 H<sub>2</sub>W-(16-64R) Acetic acid