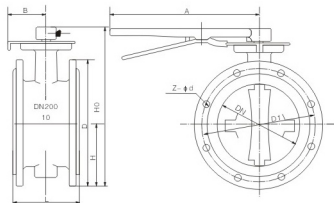


HAND OPERATED AND GEAR OPERATED FLANGED BUTTERFLY VALVE
GB, ANSI, JIS, DIN, BS

手动、蜗轮传动法兰式蝶阀



$D41^X-6-10C$ 连接尺寸 Series connection dimensions

通径 (DN) Diameter	L	D1	D	Z-d	H	H0	A	B	Weight
50	108	125	165	4-14	82.5	238	270	65	8.5
65	112	145	185	4-18	92.5	258	270	65	9.5
80	124	160	200	8-18	100	278	270	65	11
100	127	180	220	8-18	110	293	270	65	15
125	140	210	250	8-18	125	309	310	65	21
150	140	240	285	8-22	142.5	636	310	65	24
200	152	295	340	8-22	170	514	365	90	41

$D541^X-6-10C$ 、P、R、Z连接尺寸 Series connection dimensions

通径 (DN) Diameter	L	D1	D	Z-d	H	H0	A	B	D0	Weight
50	108	125	165	4-18	63	306	193	125	13	50
65	112	145	185	4-18	70	321	193	125	14	65
80	114	160	200	8-18	83	346	193	125	15.5	80
100	127	180	220	8-18	105	387	193	125	19.5	100
125	140	210	250	8-18	115	411	193	125	25.5	125
150	140	240	285	8-22	137	447	193	125	28.5	150
200	152	295	340	8-22	164	572	283	165	48	200
250	165	350	395	12-22	206	646	283	165	49	250
300	178	400	445	12-22	230	738	334	175	91	300
350	190	460	505	16-22	248	761	334	175	110	350
400	216	515	565	16-26	289	877	425	210	140	400
450	222	565	615	20-26	320	938	425	210	180	450
500	229	620	670	20-26	343	993	425	210	215	500
600	267	725	780	20-30	413	1131	425	210	290	600
700	430	840	895	24-30	478	1476	620	320	560	700
800	470	950	1015	24-33	525	1533	620	320	910	800
900	510	1050	1115	28-33	585	1655	620	320	1500	900
1000	550	1160	1230	28-36	640	1765	620	400	1750	1000
1200	630	1380	1455	32-39	755	1995	620	400	2180	1200

注: 1. 以上蝶阀的密封试验压力DN50-DN800为1.0MPa; DN900-DN1200为0.6MPa。2. 以上蝶阀连接尺寸均按1.0MPa标准制造。如用户有特殊要求, 订货时应注明。
Note: 1. the seal test pressure of above butterfly valve is 1.0Mpa when normal diameter is DN50-DN800 and is 0.6Mpa when normal diameter is DN900-DN1000.
2. connection dimension of above butterfly valve is conform to 1.0Mpa standard; please mark if user need diac rubber lined or other special requirements